



Central Wisconsin
Electric Cooperative
Your Touchstone Energy® Cooperative



By Mike Wade,
President & CEO

FROM HERE TO THERE

Our 79th Annual Meeting at the Wittenberg-Birnamwood High School was a great success and we thank you if you were able to attend. As always, we enjoyed visiting with you and sharing the accomplishments of your cooperative from the previous year. And thanks for your participation in this year's election

for directors to serve on our board of directors. Service as a director is a challenging, but extremely rewarding experience. Our success depends on engaged and committed members willing to serve as our directors.

The board is entrusted with the overall governance and strategic direction of the cooperative. Governance and strategic leadership are about making informed choices: choices about why we exist, what we want to accomplish, the resources we'll need to accomplish our goals, and how we will know if we are making a difference. These choices are essential to the long-term effectiveness of an electric cooperative operating in today's complex world. To succeed, electric cooperatives must continuously renew the connection between what they do and the needs of the members they serve.

It is our board's responsibility to:

1. Determine the cooperative's mission and core values
2. Recruit and select the chief executive officer
3. Support and assess the performance of the chief executive officer
4. Ensure that the cooperative engages in planning for its future
5. Determine the programs necessary to implement the cooperative's strategies
6. Ensure that the cooperative has adequate resources to implement its plans
7. Ensure the effective use of the cooperative's resources
8. Uphold the integrity and accountability of the cooperative

The cooperative is fortunate to have such a committed group of members at its helm. They serve with honor and integrity, and it is a pleasure to work with them as we serve the cooperative and its members.

Although we have had a wet and somewhat colder spring, I hope you are finding outdoor activities to do and are making plans for the summer. Enjoy your summer fun because it will pass all too quickly. Be safe in your travels.

The 28TH ANNUAL
ENERGY FAIR
CLEAN ENERGY + SUSTAINABLE LIVING

CUSTER, WI / JUNE 16-18 & ST. PAUL, MN / SEPT. 9-10

TheEnergyFair.org
HUNDREDS OF WORKSHOPS & EXHIBITS
LIVE MUSIC / LOCAL FOOD / SOLAR BEER / & MORE!

WI FAIR KEYNOTE: JB STRAUBEL, CTO OF TESLA!

Enter CWECOOP5 to receive \$5 off total online order for WI Energy Fair. Restrictions apply, expires 6/18/17.

April 8, 2017

Board of Directors
Central Wisconsin Electric Cooperative
10401 Lystul Road
P.O. Box 100
Rosholt, WI 54473

In accordance with your request, we have completed the count of the Board of Directors election ballots for 2017.

A total of 1,230 official ballots were received directly from the members.

Based upon the ballots received by us by the close of business on April 8, 2016, the final vote tallies are as follows:

District Number 1	Director at Large
• Tom Smith: 387 votes	• Fred W. Fleischauer: 405 votes
District Number 3	• Ron Onesti: 787 votes
• Sue Rombalski: 435 votes	

Please feel free to contact me with any questions you may have concerning the final counts.

Very truly yours,

James L. Halvorsen, CPA
Principal
CliftonLarsonAllen LLP



CWEC Celebrates 79th Annual Meeting

CWEC celebrated its 79th Annual Meeting on Saturday, April 8, with more than 250 members. The CWEC annual meeting at the Wittenberg-Birnamwood High School started with donuts and coffee at 9 a.m. The Bowler High School Pep Band entertained the members before the business meeting, which began at 10:30 a.m.

Elaine Eckendorf, chairperson of the board of directors' Governance Committee, and Jessica Shrestha, an attorney with Wheeler, Van Sickle and Anderson in Madison, presented a bylaw amendment, which was passed by the membership. The change redefined the qualifications for eligibility to serve on the board of directors.

Members learned their cooperative provided almost \$74,000 in incentives for energy efficiency upgrades during the past year, has loaned more than \$1 million to more than 30 businesses and municipalities through the USDA's Rural Development Loan and Grant program, has contributed more than \$427,000 to area projects and individuals since 2004 through Operation Round Up, and is studying the feasibility of a community solar program.

Kevin Kurtzweil, vice president of operations, detailed Central Wisconsin's participation in the Rural Electric Safety Achievement Program.

The co-op had 174 outages related to tree falls last year, Kurtzweil reported, saying the co-op just completed the third cycle of a five-year vegetation management program.

Vice President of Accounting and Finance Lila Shower reported that the co-op returned more than \$306,000 to members during the past year, retiring almost \$145,000 in capital credits and providing more than \$162,000 in energy conservation credits. Since it began retiring capital credits in 1988, the co-op has retired \$4.4 million in capital credits to their members.

Board Chairman Anthony Buss stated that Central Wisconsin Electric Cooperative's goal is to meet the needs of its member-owners, both today and tomorrow.

Members approved the results of the board election conducted by mail. Jim Halvorsen, CPA from CliftonLarsonAllen LLP, announced the election results: Incumbent Ron Onesti over one challenger, Tom Smith, and Sue Rombalski, unopposed, were returned to their seats for new three-year terms.

CEO Mike Wade re-emphasized statements made in prior reports and responded to member questions from the floor.

Area food pantries are thankful for the nearly 400 items of food donated by CWEC members at the annual meeting food drive. The food drive also helped to promote the many benefits of switching to LED from standard incandescent lighting; each person who donated three or more items was given a LED bulb.

Door prize winners were Roger Wendler, Brenda Balthazor, Glen Rutz, Charles Wasinger, Sandra Marten, Ronald Cornwell, Jennifer Kopchinski, Theresa Cook, James Martin, Wayne Klingbeil, Joshua Zablocki, William Parker, Kenneth Watters, Elaine Erickson, Maynard Lepak, Carol Agar, Russell Larson, Donna Kluck, Jerry Grosskopf, Ralph Dalke, James Wendlandt, Merlin Much, Steven Christian, Fred Schlicher, Allan Thulien, Gerald Gagas, Marvin Wierzba, Dennis Mlodik, Lyle Spiegel, Gary Hively, Evan Bestul, Daniel Shumaker, and Grand Prize Winner, Brenda Balthazor, who won a 43-inch flat-screen TV.

After the official meeting concluded a wonderful lunch was served.

Board reorganization kept the lineup of officers in place: Anthony Buss, Jr. continues as chairman; Tom Smith as vice chairman; and Sue Rombalski as secretary/ treasurer.



Thanks to our vendors

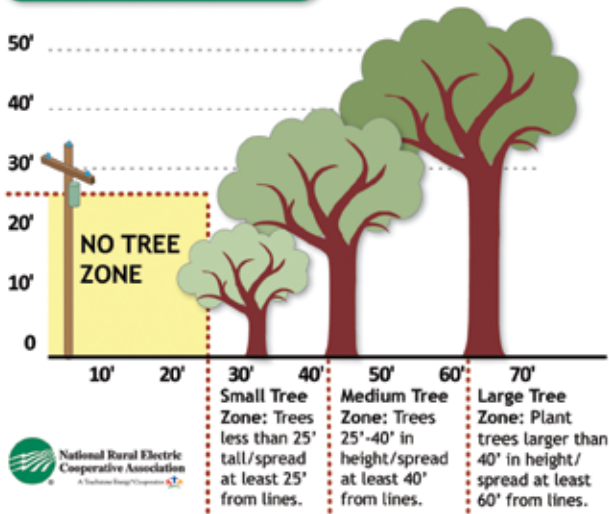
Central Wisconsin Electric Cooperative would like to thank the following vendors for their generous door prize donations to the 2017 Central Wisconsin Electric Cooperative Annual Meeting.

- AJ Construction of Wisconsin
- Altec Industries-WI
- American Transmission Company
- Asplundh Tree Expert Co
- Bell Lumber & Pole Company
- Border States Electric
- CoBank-Electric Distribution
- Complete Office of Wisconsin
- Cooperative Response Center
- Dependable Service Hydraulics LLC
- EIR Testing and Maintenance Company
- Energis High Voltage Resources
- Gordy's 66 Service & Towing
- NISC
- Nueske's
- RESCO
- Schierl Tire & Service
- The Benefit Works
- Utility Sales & Services





Tree Planting Guide



GIVE TREES A CHANCE



Trees planted too close to power lines grow into a big problem. Follow this guide when choosing trees that will be planted near power lines and you can prevent power outages, safety hazards, and additional costs that are incurred when trees are planted too close to the power lines and eventually require trimming or removal. Don't forget to call Digger's Hotline at 811 at least three business days before planting any trees or shrubs so that any underground lines can be located.

**Know what's below.
Call before you dig.**

811

Mike Wade, President & CEO

10401 Lystul Rd., P.O. Box 100, Rosholt, WI 54473
715-677-2211 • 800-377-2932
www.cwecoop.com

Follow us on Twitter and Facebook  

DATES TO REMEMBER IN JUNE

Embarrass River Lions Spring Rummage Sale

Friday, June 2 and Saturday, June 3
7 a.m.–4 p.m. Bake sale and lunch is served. Morris Town Hall, W15320 Berg Road, Tigerton, WI. For more information call David Jensen 715-535-2823.

FREE Fishing Weekend

Saturday, June 3–Sunday, June 4
Throughout the state of Wisconsin

Bring Your Tractor to Church Day Sunday, June 4

Fun starts at 9 a.m., service at 10 a.m., dinner after the service. Hitterdahl Lutheran Church, N8808 Hwy J, Iola. 50/50 raffle, burger and brat fry, prizes for the tractors. For more information call 715-445-3331.

Wittenberg Community Days

Saturday, June 10 & Sunday, June 11
Saturday – Kids Again Inflatable Fun, 2–7 p.m.; Music, 7–11 p.m. Huge fireworks show at dusk. Sunday parade at noon. Washington Park, Wittenberg. For more information go to www.wittenbergchamber.org.

Walls of Wittenberg Presents: "Emerging Talents IV"

Saturday/Sunday, June 10–June 25
Reception on Sunday, June 11 following the parade. An exhibit of original art by Wittenberg-Biramwood students grades K-12. Show opens 11 a.m.–3 p.m. each day. WOWSPACE 114 Vinal St., Wittenberg. For more information call 715-253-3525 or visit www.wallsowittenberg.com.

Walls of Wittenberg, "Third Thursday" Concert

Thursday, June 15
6–8 p.m. The Allen Brothers Band. WOW Art Park 114 Vinal St., Wittenberg. Free concert and ice cream. Rain or Shine! For more information call 715-253-3525 or visit www.wallsowittenberg.com.

Flag Day

Wednesday, June 14



28th Annual Energy Fair

Friday, June 16–Sunday, June 18
Friday & Saturday: 9 a.m.–10 p.m., Sunday: 9 a.m.–4 p.m. Located at the Midwest Renewable Energy Association in Custer. Over 200 exhibitors and workshops on sustainable living, renewable energy, and energy efficiency. Keynote speakers, Clean Transportation Show, green building demos, live music, local food, family friendly. Save with advanced tickets. Volunteers, members, and kids under 12 get in free. For more information, call 715-592-6595 or go to www.TheEnergyFair.org.

Father's Day

Sunday, June 18

3rd Annual Steak Fry

Saturday, June 24
4–7 p.m. dinner, 5–9 p.m. music. \$20 adult steak ticket, \$5 children hot dog or hamburger meal. Three cash drawings, 50/50 raffles, and basket drawings. Contact Faith Lutheran Church office for tickets and more information, 715-677-4631. Rosholt.

33rd Annual Strawberry Fest Sunday, June 25


11 a.m.–4 p.m. Raffle tickets available \$2 each or 3 for \$5 –first place \$500 cash prize and many other prizes. Iola Historical Society, Iola. For more information call 715-445-IOLA (4652) or visit www.iolahistoricalsociety.org.



To submit your community events email brenda.mazemke@cwecoop.com or call Brenda at 715-677-2211.



Central Wisconsin
Electric Cooperative

Your Touchstone Energy® Cooperative 

Board of Directors

Anthony Buss, Jr. – Chairman, District 1 • Tom Smith, Vice Chairman, District 1 • Sue Rombalski, Secretary–Treasurer, District 3
Ron Onesti, District 1 (At Large) • Lee Lehrer, District 2 • Leonard Oppor, District 2 • Elaine Eckendorf, District 3